

# Hakushika Memorial Museum of Sake – Barrier-Free Information



Slope at the Entrance/Exit of  
Sakagura Building  
(Width:100cm)



Automatic Door of the  
Sakagura-kan Reception  
Building (Width:138cm)



Sakagura-kan Gate  
(Width:163cm)



Manual Door of  
Kinen-kan  
(Width:153cm)



Slope at the Parking Lot

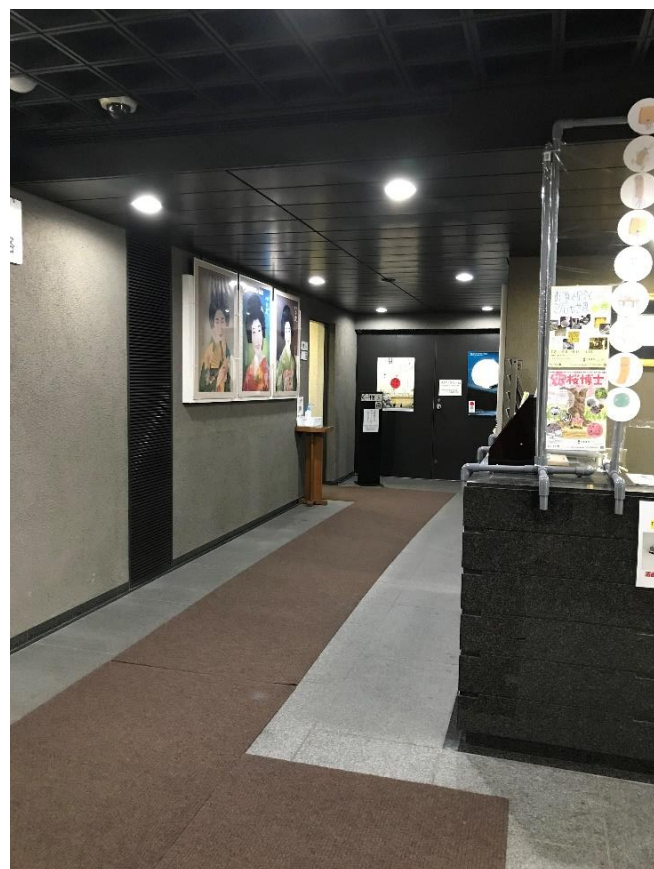


Slopes Outside of Kinen-kan

- Each bump height is within 1cm.
- Exhibition facilities are only on the first floors.



# Kinen-kan - Barrier-Free Restroom Information



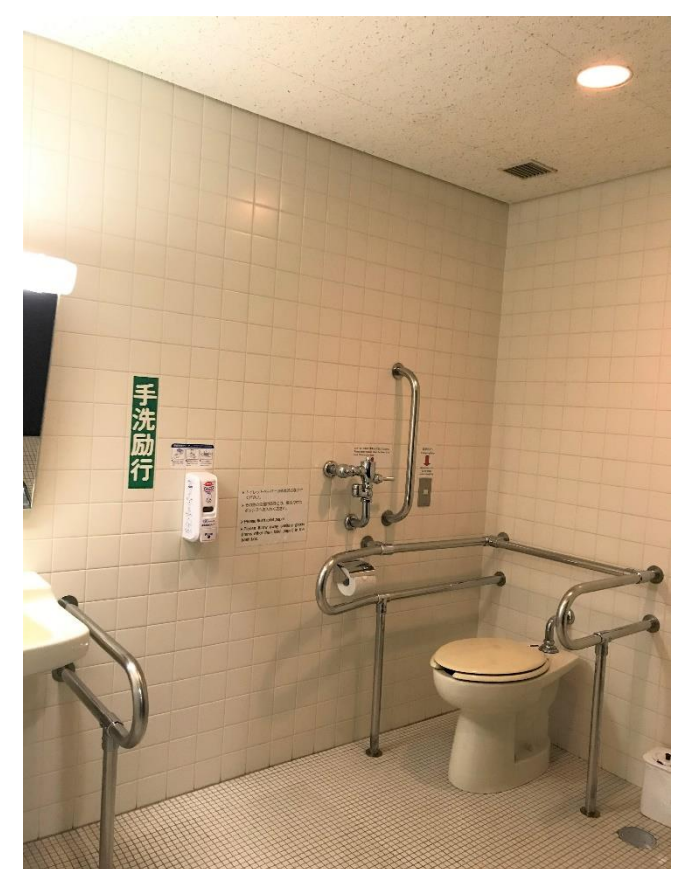
Restroom is at the end of the hallway next to the reception.



Barrier-free restroom is across from the restroom, on the right-hand side.  
(Width of the entrance:98cm)



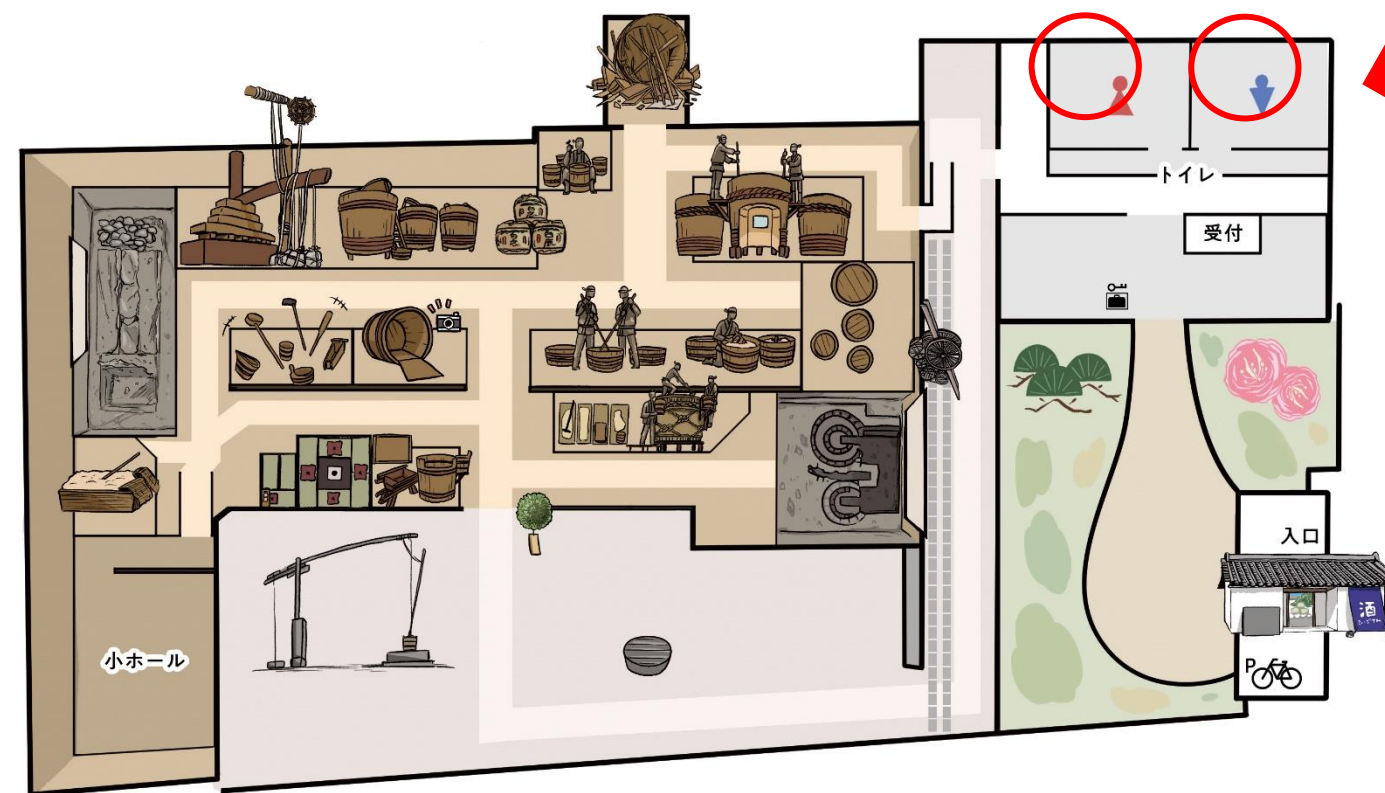
The door of the barrier-free restroom is manual.  
(Width:87cm)



Inside the barrier-free restroom  
※No sink unit for Ostomate



# Sakagura-kan – Barrier-Free Restroom Information



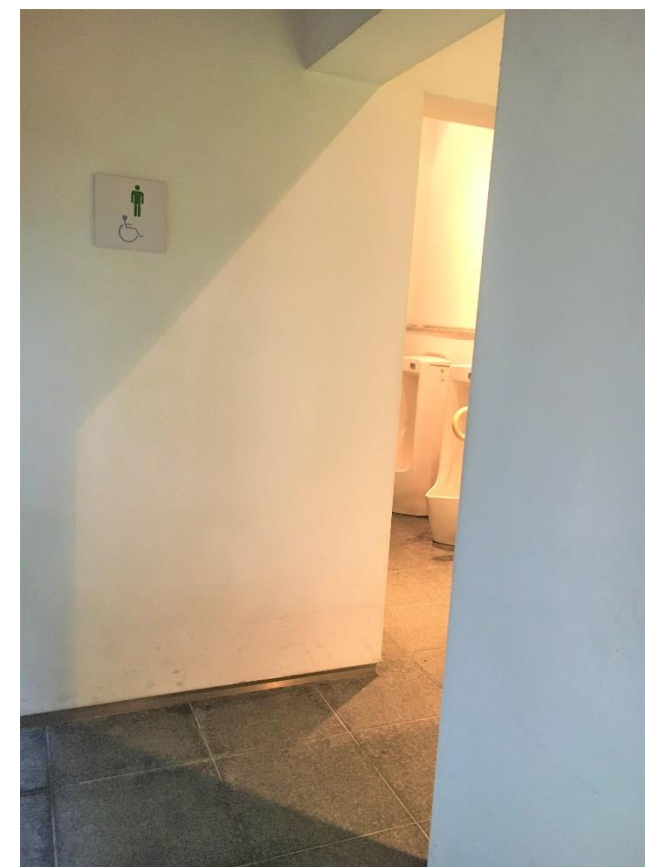
Barrier-Free Restroom  
(One for men, one for women)



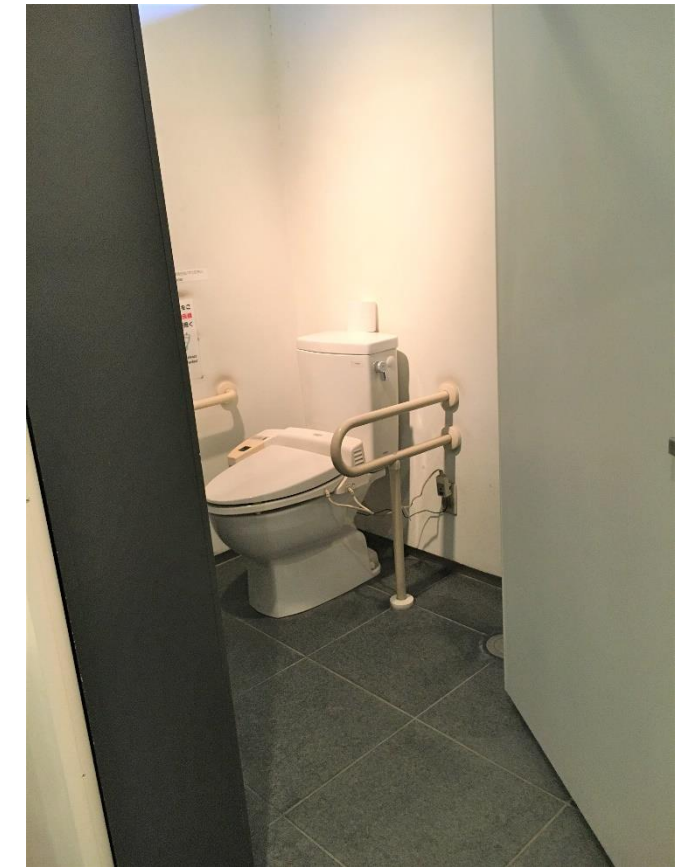
Barrier-free restroom is across from the entrance hall.  
(Width of the door:138cm)



Women's restroom is on the left and Men's on the right.  
(Width:110cm)



The bathrooms are located around the corner.  
(Width of the corner:112cm)



Inside the barrier-free restroom  
(Width of the door:86cm)  
※No sink unit for Ostomate.